

# International ICF webinar



Thursday February 24, 2022; 12:00 – 14:00 CET

## Questions and answers

From panelists and the INPRO consortium

Collected by Jaana Paltamaa



Co-funded by the  
Erasmus+ Programme  
of the European Union



1

# Q&A \_ International ICF webinar



SM Suroshree Mitra 01:28 PM

Can the spiritual domain explained in context of disability evaluation and management

[Collapse all \(1\) ^](#)



Stefanus Snyman 01:49 PM

Yes. Taking a spiritual history - as part of your history taking - is a good start. Email me and I can send you a framework how to take a spiritual history

SM Suroshree Mitra 01:32 PM

how do we motivate students to take up ICF based educational research projects

[Answer live](#)

[Type answer](#)

Answered live during the webinar by Stefanus Snyman:

- Empowering students to become change agents
- What is your goal
- Ask questions
  - Can you walk one km – yes but it is difficult
  - Are you happy - no
  - Why – environmental factor
- Patient, goals and priorities

Answered live during the webinar by Joost Hurkmans

- Learn ICF basics for your own benefit
- Introduce yourself by using the ICF

Co-funded by the  
Erasmus+ Programme  
of the European Union



2

## Q&A \_ International ICF webinar



- GL** **Glenville Liburd** 01:43 PM ...
- How can we get a copy of the ICF form used by Prof Snyman?
- [Collapse all \(3\) ^](#)
- Stefanus Snyman** 01:46 PM
- I'll send the form to Jaana (one a paper form and one for electronic use). Please improve as you trial it! And share back.
- Jaana Paltamaa (You)** 01:49 PM
- Thank, Stef. I will pass it to you all at the same time than the presentations.
- HB** **Heike Bauer-Horvath** 01:50 PM
- Thanks, that's really helpful.

Co-funded by the  
Erasmus+ Programme  
of the European Union



3

## Q&A \_ International ICF webinar



- SM** **Suroshree Mitra** 01:14 PM ...
- please share ICF based outcome measures/scales to document patient centered outcomes
- [Collapse all \(2\) ^](#)
- Stefanus Snyman** 01:45 PM
- There are numerous. One is PROMIS:  
<https://www.promishealth.org/57461-2/>
- Jaana Paltamaa (You)** 01:52 PM
- WHODAS 2.0 is also one.  
<https://www.who.int/standards/classifications/international-classification-of-functioning-disability-and-health/who-disability-assessment-schedule>

<https://www.sralab.org/rehabilitation-measures>



Finnish TOIMIA network

<https://www.terveysportti.fi/apps/dtk/tmi?toc=802599>

- K** **ksp** 02:29 PM
- Thank you for an interesting webinar - do you have any knowledge on ICF tools for assessing activity and participation in particular? In my research we look for a relevant assessment tool to assess elderly peoples functional ability with particular focus on their level of activity and participation.

Answer live

Type answer

Rehabilitation Measures  
Database



Co-funded by the  
Erasmus+ Programme  
of the European Union



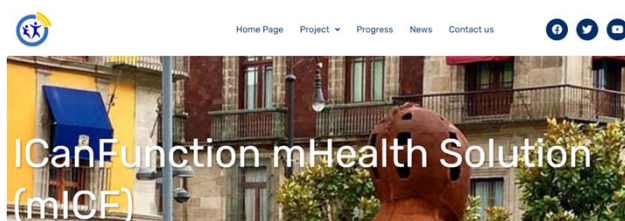
4

## Q&A \_ International ICF webinar



**SM Suroshree Mitra** 02:08 PM  
interested to know more about digital support/ digital way of ICF documentation and access for the same

**Stefanus Snyman** 02:15 PM  
There are many project around the world to digitise ICF. The mICF project is one: [www.icfmobile.org](http://www.icfmobile.org)



Co-funded by the  
Erasmus+ Programme  
of the European Union



5

## Q&A \_ International ICF webinar



**GL Glenville Liburd** 02:43 PM  
That is the challenge how do we link current assessment tools to ICF?

**SS Stefanus Snyman** 02:44 PM  
Use ICF linking rules

**GL Glenville Liburd** 02:47 PM  
Thanks you

Type answer

Cieza A, Brockow T, Ewert T, Amann E, Kollerits B, Chatterji S, Üstün T, Stucki G.  
Linking health-status measurements to the International Classification of  
Functioning, Disability and Health.  
Journal of Rehabilitation Medicine 2002; 34: 205-210.  
<http://dx.doi.org/10.1080/165019702760279189>

Cieza A, Geyh S, Chatterji S, Kostanjsek N, Üstün B, Stucki G  
ICF linking rules: an update based on lessons learned.  
Journal of Rehabilitation Medicine 2005;37(4):212-218.  
doi: 10.1080/16501970510040263

Cieza A, Fayed N, Bickenbach J, Prodinger B  
Refinements of the ICF Linking Rules to strengthen their potential for establishing  
comparability of health information  
Disabil Rehabil 2019;41(5):574-583.  
doi: 10.3109/09638288.2016.1145258

Co-funded by the  
Erasmus+ Programme  
of the European Union



6

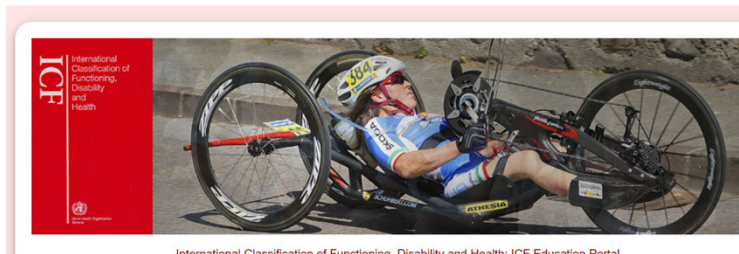
# Q&A \_ International ICF webinar



**Stefanus Snyman to Everyone**  
 You are invited to also share your ICF educational material on [www.icfeducation.org](http://www.icfeducation.org). Please!



Home About Forum Community Share Resources Research Events News Contact



International Classification of Functioning, Disability and Health: ICF Education Portal

**JK** What was the email address to Stefanus?

**Stefanus Snyman to Everyone**  
 stef@icanfunction.co.za

Co-funded by the Erasmus+ Programme of the European Union

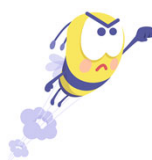
7

# International ICF webinar



## Thursday February 24, 2022; 12:00 – 14:00 CET

### Thank you !



Co-funded by the Erasmus+ Programme of the European Union

8